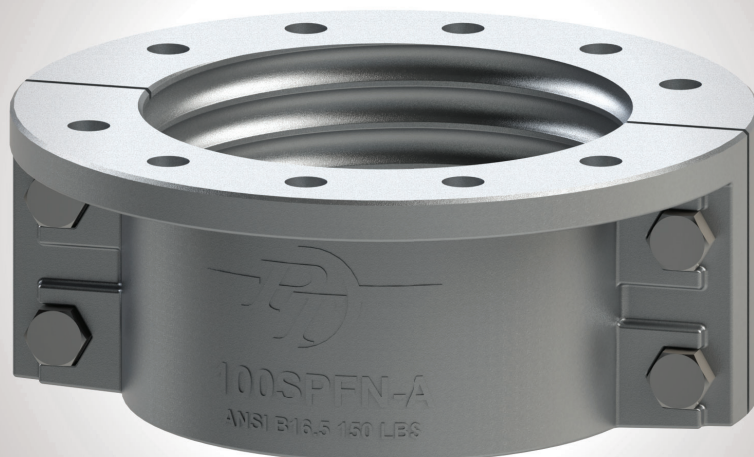




**COUPLINGS AND MORE**

## SPLIT FLANGES



PT's **SPLIT FLANGE** products are engineered for excellence, crafted here in the USA from high-grade Aluminum (A356-T6). Designed to meet the demanding needs of various industries like mining, aggregate transfer, and construction, PT's split flanges are the ideal solution for a wide range of applications including:

- Slurry Transport
- Dewatering Operations
- Dust Suppression
- General Material Handling
- Abrasive Material Handling

Each split flange features helical compatibility with the Sigma style pattern which includes Novaflex® hoses. This is a standout feature of the casting which securely holds the bolts in place during Split Flange assemblies.

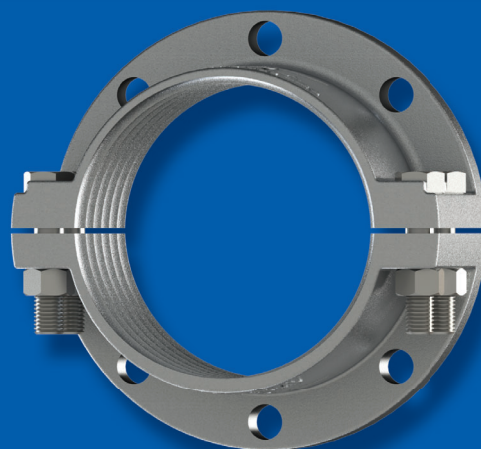
### KEY FEATURES & BENEFITS:

- Cast and Machined in the USA
- High-Grade Aluminum (A356-T6)
- Bolt Retention Feature (SAE Grade 5)
- Helical Compatibility
- Bolt Pattern Conforms to ANSI B16.5 Class 150

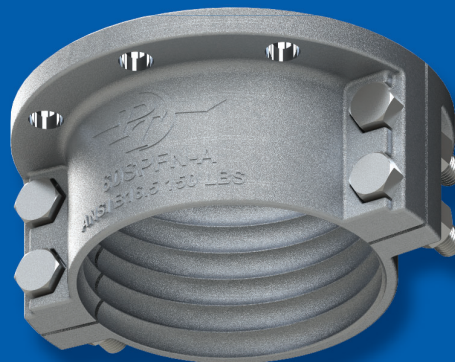


Visit your local PT Representative  
call 1-800-654-0320

[www.ptcoupling.com](http://www.ptcoupling.com)



**60SPFN**  
**(BOTTOM PERSPECTIVE)**



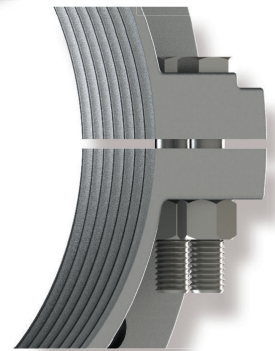
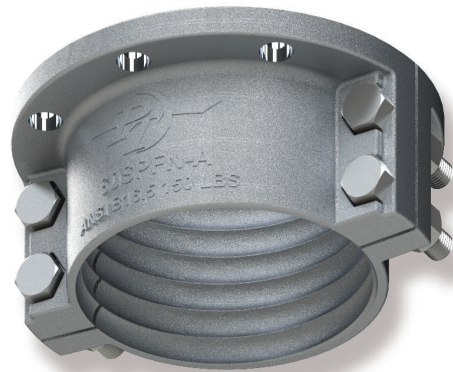
## WHY CHOOSE PT'S SPLIT FLANGES?

With our commitment to quality and innovation, PT's SPLIT FLANGE products stand out as a reliable choice for your material handling needs. Our advanced casting technology ensures that each flange is not only durable but also precisely engineered to meet your specifications. Whether you're dealing with abrasive materials or managing dust suppression, our flanges are designed to deliver consistent, reliable performance.

**Cast and Machined in the USA:** Ensuring top-notch quality and precision. **Bolt Retention Feature:** Securely holds bolts in place during assembly, making the installation process smooth and efficient.

**Helical Compatibility:** Designed to be compatible with Sigma helix style hoses, which includes Novaflex® hose, providing versatility and ease of integration.

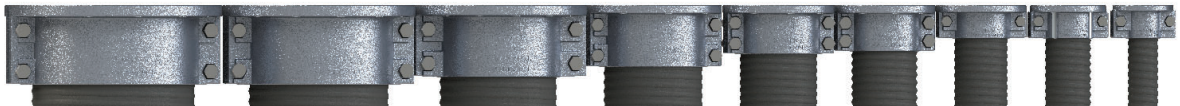
**High-Grade Aluminum (A356-T6):** Offers excellent durability and resistance to corrosion, ensuring long-lasting performance in challenging environments.



\*GASKETS SOLD SEPARATELY

SPLIT FLANGES				
SIZE	ITEM NO.	DESCRIPTION	MATERIAL	HELIX STYLE
2"	5800201	20SPFN ALUM	A356-T6 ALUM	SIGMA
3"	5800301	30SPFN ALUM	A356-T6 ALUM	SIGMA
4"	5800401	40SPFN ALUM	A356-T6 ALUM	SIGMA
5"	5800501	50SPFN ALUM	A356-T6 ALUM	SIGMA
6"	5800601	60SPFN ALUM	A356-T6 ALUM	SIGMA
8"	5800801	80SPFN ALUM	A356-T6 ALUM	SIGMA
10"	5801001	100SPFN ALUM	A356-T6 ALUM	SIGMA
12"	5801201	120SPFN ALUM	A356-T6 ALUM	SIGMA
14"	5801401	140SPFN ALUM	A356-T6 ALUM	SIGMA

GASKETS		
SIZE	ITEM NO.	DESCRIPTION
2"	5800202	PF20G BUNA
3"	5800302	PF30G BUNA
4"	5800402	PF40G BUNA
5"	5800502	PF50G BUNA
6"	5800602	PF60G BUNA
8"	5800802	PF80G BUNA
10"	5801002	PF100G BUNA
12"	5801202	PF120G BUNA
14"	5801402	PF140G BUNA



**Call your local PT Representative today or go online to find out how PT has solutions for your needs:**

CALL 800-654-0320 / EMAIL: [INFO@PTCOUPLING.COM](mailto:INFO@PTCOUPLING.COM)

**NAHAD**  
HOSE SAFETY INSTITUTE  
MEMBER

ISO 9001:2015  
CERTIFIED  
COMPANY

**NTTC**  
NATIONAL TANK TRUCK CARRIERS

**PEI**

[www.ptcoupling.com](http://www.ptcoupling.com)



@ptcouplingusa



/ptcoupling

**PT**  
COUPLINGS AND MORE